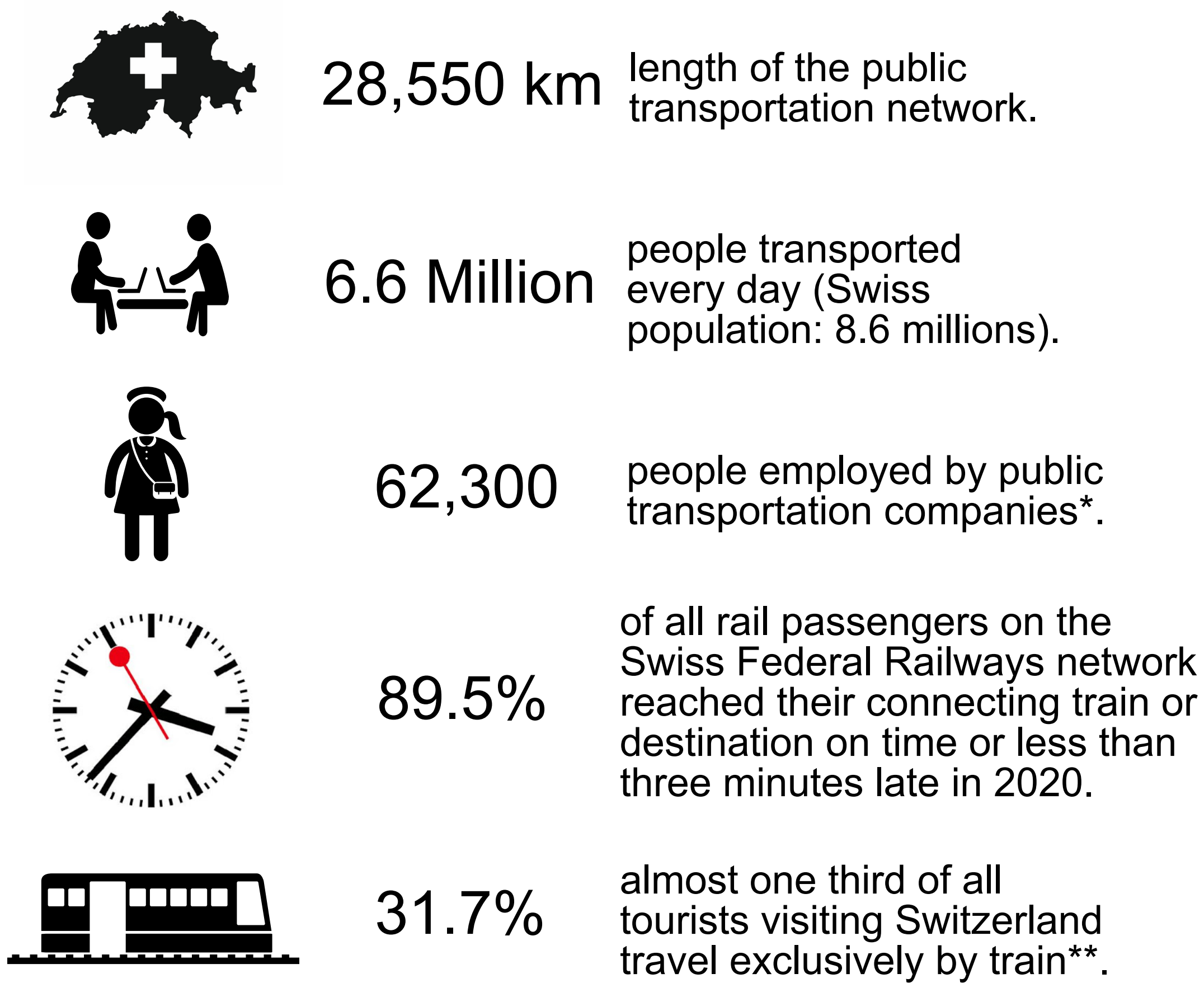


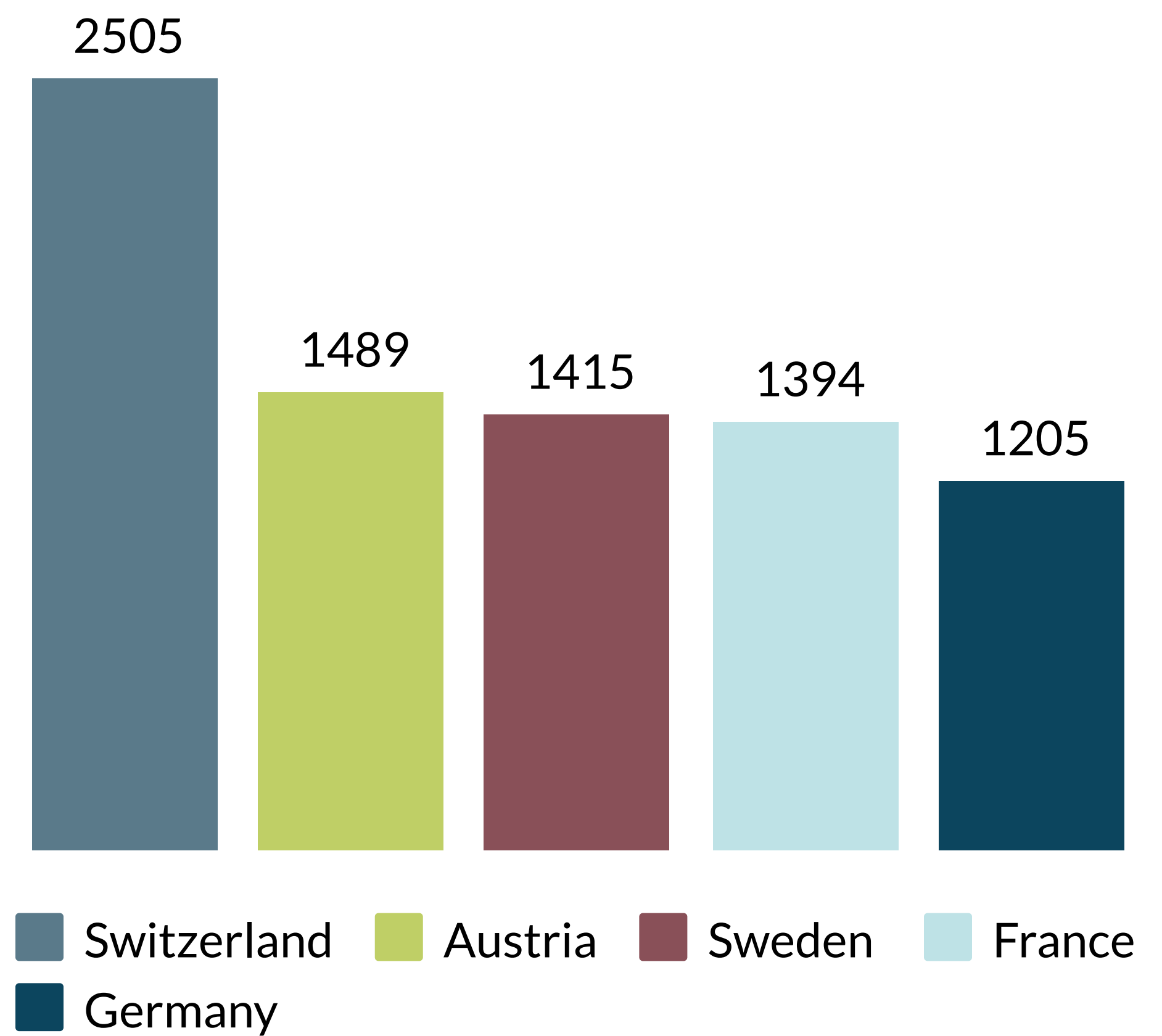


# Public Transport in Switzerland.

## Key figures\*

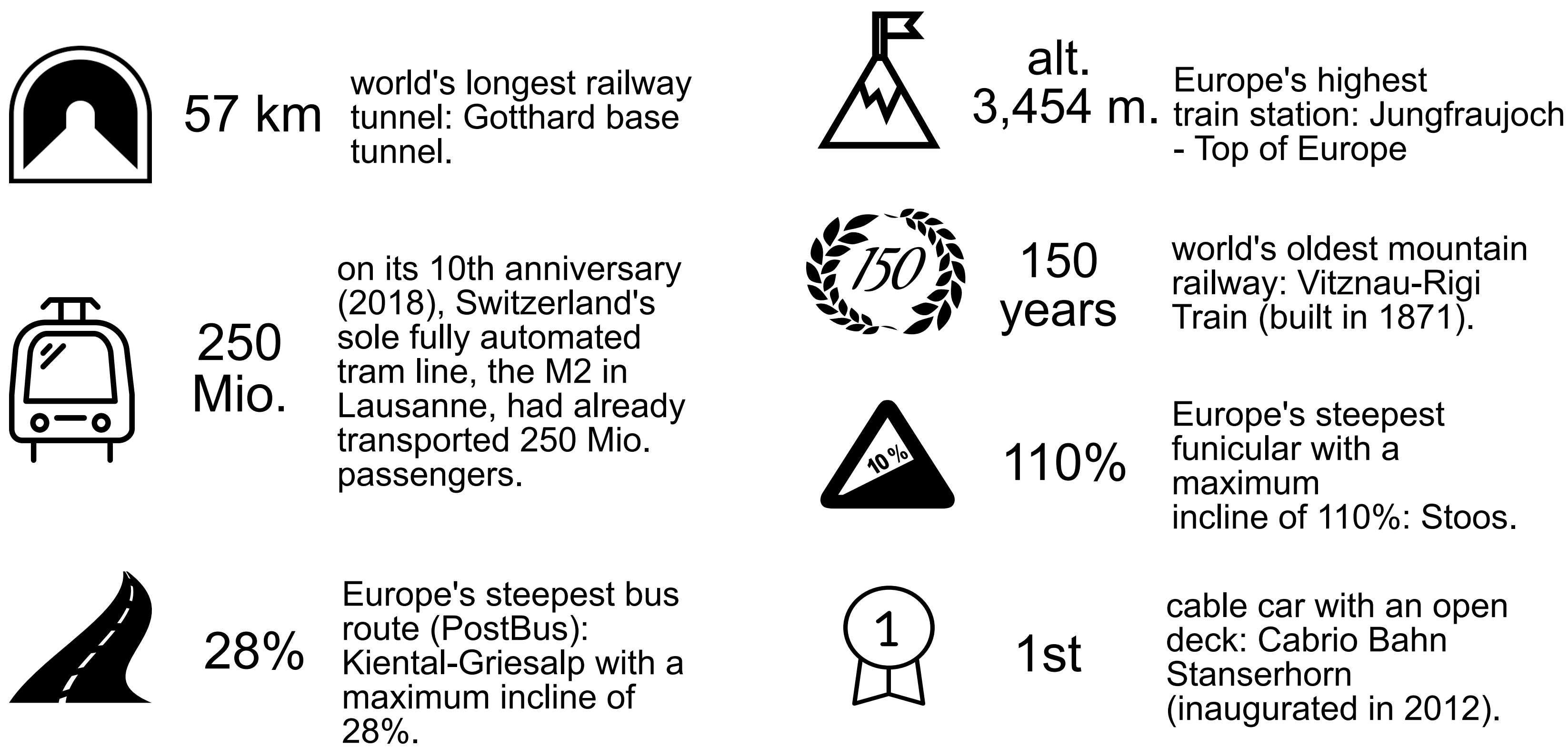


## Number of rail kilometers travelled per resident per year\*

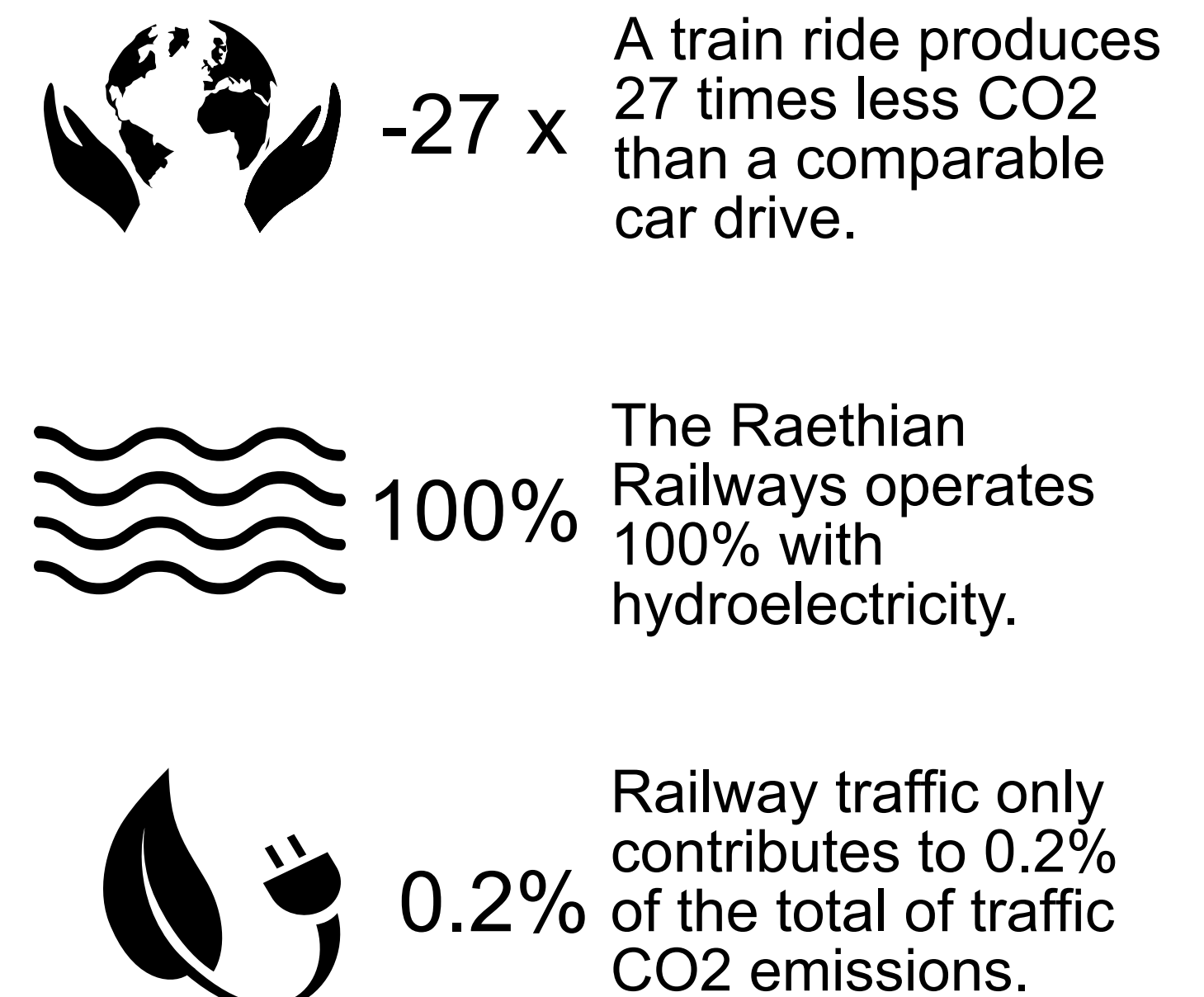


Sources: \* Swiss Public Transport Union, 2018/21, Litra 2018/19 / Direct and indirect jobs  
\*\* Tourism Monitor Switzerland 2017

## A few records



## About sustainability\*



Sources: \* Swiss Public Transport Union, 2018/21, Litra 2018/19

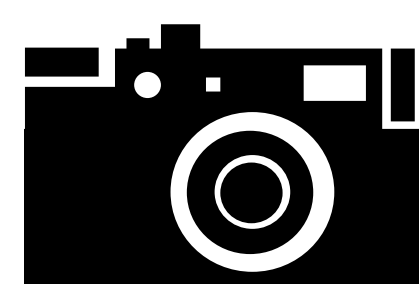
## Tourists who most frequently travel by train in Switzerland\*

1. Korea (74.9%)
2. Greater China (71.9%)
3. Japan (68.2%)
4. Southeast Asia (66.3%)
5. India (63.4%)
6. USA (62.1%)
7. Canada (60.4%)
8. Australia / NZ (57.6%)
9. United Kingdom (54.3%)
10. Brazil (53.9%)

\* According to their country of origin.  
Source: Tourism Monitor Switzerland 2017.

## The premium panoramic trains

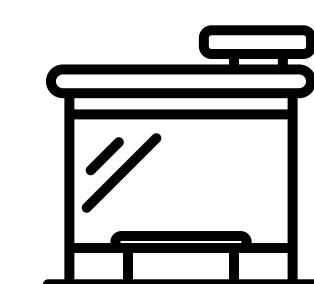
- [Bernina Express](#)
- [Glacier Express](#)
- [GoldenPass Panoramic](#)
- [Gotthard Panorama Express](#)
- [Luzern-Interlaken Express](#)



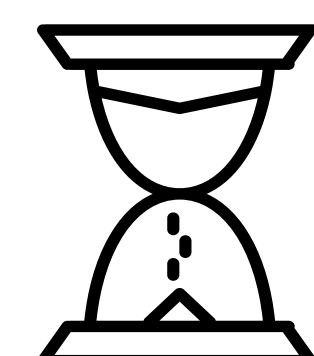
## Did you know ?



250 transport companies are partners of the [Swiss Travel Pass](#)



In Switzerland, 360 meter is the average walking distance to the next public transport station/stop.



The conception phase of the Swiss Railways' timetable begins 20 years before its implementation.